

THE GREENHOUSE GAS PROJECT OF ESA'S CLIMATE CHANGE INITIATIVE (GHG-CCI): PHASE 2 ACHIEVEMENTS AND FUTURE PLANS

M. Buchwitz¹, M. Reuter¹, O. Schneising¹, H. Boesch², I. Aben³, M. Alexe⁴, R. Armante⁵, P. Bergamaschi⁴, H. Bovensmann¹, D. Brunner⁶, B. Buchmann⁶, J. P. Burrows¹, A. Butz⁷, F. Chevallier⁸, A. Chédin⁵, C. D. Crevoisier⁵, M. De Mazière¹⁰, E. De Wachter¹⁰, R. Detmers³, B. Dils¹⁰, C. Frankenberg¹¹, S. Gonzi⁹, P. Hahne⁷, O. P. Hasekamp³, W. Hewson², J. Heymann¹, S. Houweling³, M. Hilker¹, T. Kaminski¹², G. Kuhlmann⁶, A. Laeng⁷, T. T. v. Leeuwen³, G. Lichtenberg¹³, J. Marshall¹⁴, S. Noël¹, J. Notholt¹, P. I. Palmer⁹, R. Parker², P. Somkuti², M. Scholze¹⁵, G. P. Stiller⁷, T. Warneke¹, C. Zehner¹⁶

1. *Institute of Environmental Physics (IUP), University of Bremen, Bremen, Germany, E-mail: Michael.Buchwitz@iup.physik.uni-bremen.de*
2. *University of Leicester, Leicester, United Kingdom*
3. *SRON Netherlands Institute for Space Research, Utrecht, The Netherlands*
4. *European Commission Joint Research Centre (EC-JRC), Institute for Environment and Sustainability (IES), Air and Climate Unit, Ispra, Italy*
5. *Laboratoire de Météorologie Dynamique (LMD), Palaiseau, France*
6. *Swiss Federal Laboratories for Materials Science and Technology (Empa), Dübendorf, Switzerland*
7. *Karlsruhe Institute of Technology (KIT), Karlsruhe, Germany*
8. *Laboratoire des Sciences du Climat et de l'Environnement (LSCE), Gif-sur-Yvette, France*
9. *University of Edinburgh, Edinburgh, United Kingdom (UK)*
10. *Belgian Institute for Space Aeronomy (BIRA), Brussels, Belgium*
11. *Jet Propulsion Laboratory (JPL), Pasadena, California, United States of America*
12. *The Inversion Lab, Hamburg, Germany*
13. *Deutsches Zentrum für Luft- und Raumfahrt (DLR), Oberpfaffenhofen, Germany*
14. *Max-Planck-Institute for Biogeochemistry (MPI-BGC), Jena, Germany*
15. *Lund University, Lund, Sweden*
16. *European Space Agency (ESA), ESRI, Frascati, Italy*

ABSTRACT

The GHG-CCI project (<http://www.esa-ghg-cci.org/>) is one of several projects of the European Space Agency's (ESA) Climate Change Initiative (CCI). The goal of the CCI is to generate and deliver data sets of various satellite-derived Essential Climate Variables (ECVs) in line with GCOS (Global Climate Observing System) requirements. The "ECV Greenhouse Gases" (ECV GHG) is the global distribution of important climate relevant gases – namely atmospheric CO₂ and CH₄ – with a quality sufficient to obtain information on regional CO₂ and CH₄ sources and sinks. The main goal of GHG-CCI is to generate long-term highly accurate and precise time series of global near-surface-sensitive satellite observations of CO₂ and CH₄, i.e., XCO₂ and XCH₄, starting with the launch of ESA's ENVISAT satellite. These products are currently retrieved from SCIAMACHY/ENVISAT (2002-2012) and TANSO-FTS/GOSAT (2009-today) nadir mode observations in the near-infrared/shortwave-infrared spectral region. In addition, other sensors (e.g., IASI and MIPAS) are also considered and in the future also data from other satellites. The GHG-CCI data products and related documentation are freely available via the GHG-CCI website. Here we present an overview about the latest data set (Climate Research Data Package No. 2 (CRDP#2)) focusing on the GHG-CCI core products and present a short overview about GHG-CCI-related achievements in terms of scientific publications.

1. INTRODUCTION

Carbon dioxide (CO₂) is the most important anthropogenic greenhouse gas responsible for global warming (IPCC, 2013). Despite its importance, our knowledge of the CO₂ sources and sinks is inadequate and does not meet the needs for attribution, mitigation and the accurate prediction of future change (e.g., Ciais et al., 2010, 2014; Canadell et al., 2010; IPCC, 2013; CEOS, 2014), and despite efforts to reduce CO₂ emissions, atmospheric CO₂ continues to increase with approximately 2 ppm/year (Fig. 1; Le Quééré et al., 2014). Appropriate knowledge about the CO₂ sources and sinks is needed for reliable prediction of the future climate of our planet (IPCC, 2013). This is also true for methane (CH₄; e.g., IPCC, 2013; Kirschke et al., 2013). The goal of the GHG-CCI project (Buchwitz et al., 2015a), which is one of several projects of ESA's Climate Change Initiative (CCI, Hollmann et al., 2013), is to generate global satellite-derived CO₂ and CH₄ data sets as needed to improve our understanding of the regional sources and sinks of these important atmospheric gases. Global near-surface-sensitive satellite observations of CO₂ and CH₄ combined with inverse modeling yields information on the regional sources and sinks of these gases. The goal of the GHG-CCI project is to generate Essential Climate Variable (ECV) Greenhouse Gases (GHG) data sets as required by GCOS. The GCOS definition of this ECV is (GCOS, 2011): "Product Number A.8.1: Retrievals of greenhouse gases, such as CO₂ and CH₄, of sufficient quality to estimate regional sources and sinks".

Figure 1 (a) shows Northern Hemispheric XCO_2 , i.e., the column-averaged CO_2 dry air mole fraction (in ppm), as retrieved from SCIAMACHY/ENVISAT and TANSO-FTS/GOSAT using four different GHG-CCI retrieval algorithms (see Sect. 2). Clearly visible is the CO_2 seasonal cycle - primarily caused by uptake and release of CO_2 by the terrestrial biosphere - and the atmospheric CO_2 increase with time, which is primarily caused by

burning of fossil fuels (fraction not taken up by the terrestrial biosphere or the oceans). Also visible is the good agreement of the different GHG-CCI CRDP#2 XCO_2 data products. Perfect agreement is not expected due to different spatio-temporal sampling and different altitude sensitivities (averaging kernels). Corresponding XCO_2 and XCH_4 maps are shown in Fig. 1 (b).

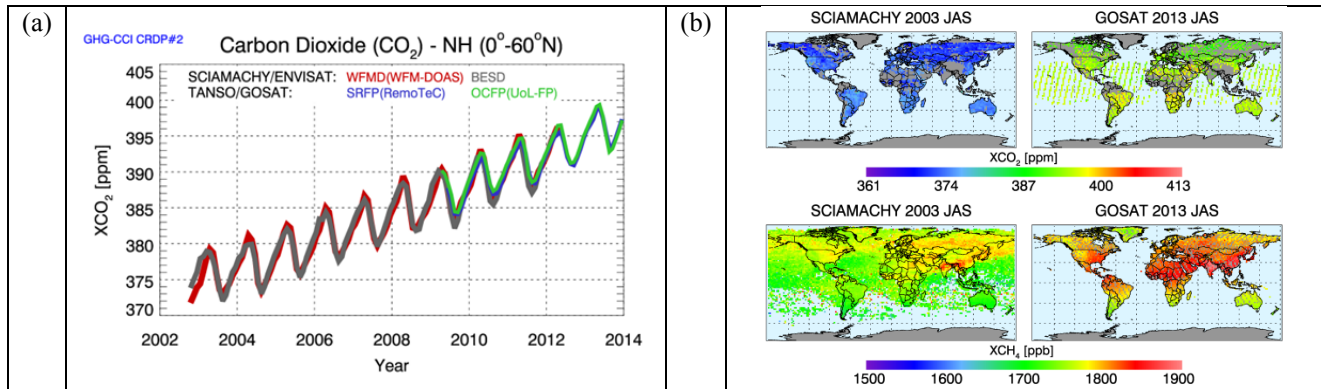


Fig. 1: (a) GHG-CCI CRDP#2 XCO_2 Northern Hemisphere 2002-2013 (see Tab. 2 for details). (b) GHG-CCI CRDP#2 XCO_2 (top) and XCH_4 (bottom) maps for July-September 2003 (left) and 2013 (right).

Currently multi-year measurements from two satellite instruments can be used to retrieve information on CO_2 and CH_4 with sufficient near-surface-sensitivity: SCIAMACHY on ENVISAT (2002 - April 2012) (Burrows et al., 1995; Bovensmann et al., 1999) and TANSO-FTS on-board GOSAT (launched in 2009) (Kuze et al., 2009). Both instruments perform (or have performed) nadir observations in the near-infrared/short-wave-infrared (NIR/SWIR) spectral region covering the relevant absorption bands of CO_2 , CH_4 and O_2 (needed to obtain the “dry-air column” used to compute GHG column-averaged dry-air mole fractions, i.e., XCO_2 (in ppm) and XCH_4 (in ppb)). These two instruments are therefore currently the two main sensors used within GHG-CCI. The corresponding retrieval algorithms are referred to as “ECV Core Algorithms” (ECAs) within GHG-CCI.

In addition, a number of other sensors are also used within GHG-CCI (e.g., MIPAS/ENVISAT and IASI/MetOp-A) as they provide additional constraints for atmospheric layers above the planetary boundary layer. The corresponding retrieval algorithms are referred to as “Additional Constraints Algorithms” (ACAs) within GHG-CCI.

Even moderate to strong CO_2 and CH_4 sources and sinks only result in quite small changes of the column-averaged mole fractions relative to their background concentration. High relative accuracy of the satellite retrievals is required because even very small (regional) biases can lead to significant errors of the inferred surface fluxes. One of the first activities within GHG-CCI was to establish the user requirements, e.g., in terms of required accuracy and precision of the different data products. The result of this activity was the initial version of the GHG-CCI User Requirements Document (URD) (Buchwitz et al., 2011), which has recently been updated (Chevallier et

al., 2014b). Note that the GHG-CCI URD requirements are more detailed and often also more demanding compared to the GCOS requirements (GCOS, 2011).

The GHG-CCI data products and related documentation are freely available via the GHG-CCI website and yearly updates generated with improved retrieval algorithms and covering (where possible) longer time series are foreseen.

Here we present an overview about the latest data set - Climate Research Data Package No. 2 (CRDP#2) (Sect. 2) - and shortly summarize some key scientific achievements (Sect. 3). For the latter however we primarily have to limit ourselves to the presentation of a list of scientific publications where the GHG-CCI CO_2 and CH_4 data sets have been used to improve our understanding of the natural and anthropogenic sources and sinks of these important greenhouse gases. We also shortly mention ongoing activities and future plans (Sect. 4).

2. CLIMATE RESEARCH DATA PACKAGE 2 (CRDP#2)

In this section, we present an overview about the GHG-CCI CRDP#2. CRDP#2 consists of several satellite-derived CO_2 and CH_4 data products and related documentation (freely available from <http://www.esa-ghg-cci.org> -> CRDP (Data)). Via the GHG-CCI website also the previous data set CRDP#1 and related documentation is available. Note that for CRDP#2 an improved data format has been defined focusing on harmonization of the ECA products (Buchwitz et al., 2014).

An overview about the various satellite-derived data products stored in the CRDP#2 data base is shown in Tab. 1, providing a general overview for ECA and ACA products, and Tab. 2, providing details on ECA products.

Table 2 lists the GHG-CCI ECV core data products XCO₂ and XCH₄ as retrieved from SCIAMACHY/ENVISAT and TANSO-FTS/GOSAT. Note that more details for each product are available on the GHG-CCI website including spatio-temporal coverage, detailed documentation (e.g., Algorithm Theoretical Basis Documents (ATBDs)), point of contact information, information on data access, figures, etc.

As can be seen from Tab. 2 typically the same product (e.g., XCO₂ from SCIAMACHY) has been generated using different retrieval algorithms. We encourage users of our data products to make use of the fact that several different methods are available to generate a given product. This gives users the possibility to find out if important conclusions drawn by using one product are robust with respect to the method used to generate that product. This however may require significant effort and is therefore not always possible. For users who only want to use one product but do not know which one to choose, we aimed at defining one recommended “baseline product” generated with a baseline algorithm (see Tab. 2). The other products are called “alternative products”. Note that the quality of an alternative product may be (at least on average) equivalent to the corresponding baseline product. Typically different methods have different strengths and weaknesses and therefore which product to use for a given application is expected to depend on the application. For our products we found (typically quite) small but potentially still significant differences between the baseline and the alternative products but have not yet always been able to clearly identify which of the products is better (e.g., due to the limited number of ground-based validation sites). For this reason we have not yet defined a baseline product for all products (see Tab. 2).

As can also be seen from Tab. 2, the XCH₄ algorithms / products are typically classified as “Full Physics” (FP) or “Proxy” (PR). The PR algorithms are using simultaneously retrieved CO₂ columns and model CO₂ columns to convert the retrieved methane columns (in molecules/area) to XCH₄ (in ppb), whereas the FP algorithms do not rely on modelled CO₂. The advantage of the PR algorithms is that scattering related errors (due to aerosols and clouds) cancel to a large extent when computing the CH₄ to CO₂ column ratio. As a consequence, the PR algorithms are typically simpler and faster and typically deliver a larger number of quality filtered (i.e., “good”) observations. See, e.g., Schepers et al., 2012, for a discussion of XCH₄ FP and PR methods.

Note that we have also generated a merged XCO₂ product via the EMMA algorithm (Reuter et al., 2013) by combining the individual SCIAMACHY and GOSAT XCO₂ products. Currently however the EMMA CRDP#2 product covers only a limited time period (see Tabs. 1 and 2). However, also a recently updated product (EMMA v2.0) is available via the GHG-CCI website covering 4 years. Within GHG-CCI the EMMA XCO₂ product is also used as a comparison tool for the individual products.

In line with the GHG-CCI user requirements (Chevallier et al., 2014b) the GHG-CCI ECA data products listed in

Tab. 2 are (non-gridded) Level 2 products, i.e., they contain XCO₂ and XCH₄ values for each single observation along with information on time and location, uncertainty, quality flag, etc. (see Buchwitz et al., 2014, for details). Validation results for CRDP#2 are reported in the “Product Validation and Intercomparison Report, version 3.2” (PVIRv3.2, Buchwitz et al., 2015b, see also Tab. 3) and initial user assessments as carried out by the GHG-CCI Climate Reserch Group (CRG) are reported in the “Climate Assessment Report, version 2” (CARv2, Chevallier et al., 2015). These documents are updates of the corresponding CRDP#1 documents PVIRv2.0 (Notholt et al., 2013) and CARv1.1 (Chevallier et al., 2013).

3. OVERVIEW GHG-CCI SCIENTIFIC ACHIEVEMENTS

The GHG-CCI data products of CRDP#1 and CRDP#2 have been used to address a number of scientific carbon and climate issues as can be seen from section REFERENCES (note that all GHG-CCI-related publications are marked with (*)). A detailed overview on all GHG-CCI peer-reviewed publications (available until March 2015) is given in Buchwitz et al., 2015c, which is also available from the GHG-CCI website. As can be seen from section REFERENCES in total 38 peer-reviewed publications exist (May 2015), where GHG-CCI funding has been explicitly acknowledged. The list of all GHG-CCI publications is available via the GHG-CCI website (<http://www.esa-ghg-cci.org> -> Publications), where also links to the publications are given. Please visit this website for the most up-to-date list of all GHG-CCI publications. Here we would like to highlight only two publications:

Reuter et al., 2014a, used an ensemble of satellite XCO₂ data products and a new inversion method to quantify the strength of the European carbon sink. Their results indicate that this sink is likely larger than hitherto known. See also the related ESA webstory “Is Europe an underestimated sink for carbon ?”

(http://www.esa.int/Our_Activities/Observing_the_Earth/Is_Europe_an_underestimated_sink_for_carbon_dioxide)

Reuter et al., 2014b, studied co-located SCIAMACHY XCO₂ and NO₂ retrievals over major anthropogenic source regions. For East Asia they found increasing emissions of NO_x (+5.8%/year) and CO₂ (+9.8%/year), i.e., decreasing emissions of NO_x relative to CO₂ indicating that the recently installed and renewed technology in East Asia, such as power plants and transportation-related sources, is cleaner in terms of NO_x emissions per amount of fossil fuel burned than the old infrastructure, and roughly matches relative emission levels in North America and Europe. (http://www.esa.int/Our_Activities/Observing_the_Earth/Space_for_our_climate/Good_and_bad_news_for_our_atmosphere)

GHG-CCI Climate Research Data Package (CRDP#2)														
Main Product ID	Product (Level 2, mole fractions)	Years processed												
		2002	03	04	05	06	07	08	09	10	11	12	13	14
GHG-CCI Core Products: ECV Core Algorithm (ECA) Products														
XCO2 SCIA	XCO ₂													
XCH4 SCIA	XCH ₄													
XCO2 GOSAT	XCO ₂													
XCH4 GOSAT	XCH ₄													
XCO2 EMMA	XCO ₂													
Additional Constraints Algorithm (ACA) Products														
CO2 IASI	CO ₂ (1)													
CH4 IASI	CH ₄ (1)													
CH4 SCIAOCC	CH ₄ (2)													
CO2 SCIAOCC	CO ₂ (2)													
CO2 ACEFTS	CO ₂ (2)													
CH4 MIPAS	CH ₄ (2)													
CO2 AIRS	CO ₂ (1)													
Comments:		ECA Algorithms for column-averaged dry air mole fractions:												
ACA products:		XCO2_SCIA: BESD, WFMD												
(1) Mid / upper tropospheric column		XCH4_SCIA: WFMD, IMAP												
(2) Upper tropospheric / stratospheric profile		XCO2_GOSAT: SRFP (RemoTeC), OCFP (UoL-FP)												
CRDP#2		XCH4_GOSAT: SRFP & SRPR (RemoTeC), OCPR (UoL-PR)												
Also available		XCO2_EMMA: Various (SCIA & GOSAT merged)												

Tab. 1: Overview CRDP#2. For details on the core algorithms see Tab. 2.

GHG-CCI CRDP#2: ECV Core Algorithm (ECA) Products				
Algorithm / Product ID (version)	Product	Sensor Satellite	Algorithm Institute	Comment (Reference)
CO2_SCI_BESD (v02.00.08)	XCO ₂	SCIAMACHY ENVISAT	BESD IUP	SCIAMACHY XCO ₂ baseline product (Reuter et al., 2011)
CO2_SCI_WFMD (v3.8)	XCO ₂	SCIAMACHY ENVISAT	WFM-DOAS IUP	SCIAMACHY XCO ₂ alternative product (Schneising et al., 2011)
CO2_GOS_OCPR (v5.1 (§))	XCO ₂	TANSO GOSAT	UoL-FP UoL	GOSAT XCO ₂ product (baseline not yet decided) (Cogan et al., 2012)
CO2_GOS_SRFP (v2.3.6)	XCO ₂	TANSO GOSAT	RemoTeC SRON/KIT	GOSAT XCO ₂ product (baseline not yet decided) (Butz et al., 2011)
CO2_EMMA (v1.7)	XCO ₂	Merged SCIA and GOSAT	EMMA IUP (lead)	Short time period only (6.2009-7.2010) (Reuter et al., 2013) (*)
CH4_SCI_WFMD (v3.7)	XCH ₄	SCIAMACHY ENVISAT	WFM-DOAS IUP	SCIAMACHY XCH ₄ proxy product (baseline not yet decided) (Schneising et al., 2011)
CH4_SCI_IMAP (v7.0)	XCH ₄	SCIAMACHY ENVISAT	IMAP SRON/JPL	SCIAMACHY XCH ₄ proxy product (baseline not yet decided) (Frankenberg et al., 2011)
CH4_GOS_OCPR (v5.1 (§))	XCH ₄	TANSO GOSAT	UoL-PR UoL	GOSAT XCH ₄ proxy baseline product (Parker et al., 2011)
CH4_GOS_SRPR (v2.3.6)	XCH ₄	TANSO GOSAT	RemoTeC SRON/KIT	GOSAT XCH ₄ proxy alternative product (Butz et al., 2010)
CH4_GOS_SRFP (v2.3.6)	XCH ₄	TANSO GOSAT	RemoTeC SRON/KIT	GOSAT XCH ₄ full physics baseline product (Butz et al., 2011)
Details (temporal coverage, etc.): http://www.esa-ghg-cci.org -> CRDP (Data)				

Tab. 2: Overview GHG-CCI core ("ECA") data products. (*) The latest version, EMMAv2.0, covers 4 years and is also available on the GHG-CCI website. (§) Improved v5.2 products also available on GHG-CCI website.

GHG-CCI CRDP#2: Comparison of ECA products with GCOS Requirements

Variable ^(*)	Resolution	Accuracy	Stability
XCO₂	Temporal: GCOS: 4 hours Achieved: Days Note: No existing nor any planned mission meets the GCOS temporal resolution requirement.	GCOS: < 1 ppm URD ^(#) : < 0.5 ppm Achieved ^(#) : 0.4-0.9 ppm ^(?) (?) Depending on sensor, time period and assessment method	GCOS: < 0.2 ppm/yr URD: < 0.5 ppm/yr Achieved: << 0.5 ppm/yr ⁽⁺⁾ (+) Derived trends not significant
XCH₄	Spatial: GCOS: 5-10 km Achieved ^(§) : 10 km (\$ for GOSAT. SCIAMACHY: 30x60 km ² . Note: GCOS requirements are target (maximum) requirements but URD requirements listed here are threshold (minimum) requirements.	GCOS: < 10 ppb URD ^(#) : < 10 ppb Achieved ^(#) : 3-8 ppb(\$) (§) for GOSAT; for SCIAMACHY 8-15 ppb depending on time period (degradation after Oct. 2005)	GCOS: < 2 ppb/yr URD: < 10 ppb/yr Achieved: < 4 ppb/yr ^(!) (!) Derived trends mostly not significant but note (§§)
		(#) Relative accuracy (i.e., excluding possible constant global offset) estimated by comparison with TCCON ground-based observations; TCCON accuracy (1-sigma): 0.4 ppm for XCO ₂ and 3.5 ppb for XCH ₄ (§§) Stability as used here quantifies only long-term drift and therefore does not capture certain "jumps" due to detector issues as observed when analyzing the global SCIAMACHY XCH ₄ (e.g., IMAP product mid 2010)	

(*) Requirements for column-averaged mole fractions (= air column normalized vertical GHG columns) as required by URD; it is assumed here that this corresponds to GCOS variables „Tropospheric CO₂ column“ and „Tropospheric CH₄ column“

References: GCOS (GCOS-154): *GCOS, 2011*; URD: *Chevallier et al., 2015*

Definition: ECV GHG (GCOS-154): Product A8.1: Retrievals of CO₂ and CH₄ of sufficient quality to estimate regional sources and sinks

Tab. 3: Comparison of the characteristics of the GHG-CCI CRDP#2 core (ECA) products with user requirements. From: *Buchwitz et al., 2015b* (PVIRv3.2).

4. ONGOING ACTIVITIES AND FUTURE PLANS

Currently (May 2015) GHG-CCI team members are working on further improving the retrieval algorithms to be used for re-processing of the satellite data. The next version of the GHG-CCI Climate Research Data Package, CRDP#3, will be released in April 2016 (including documentation on validation (PVIR) and initial user assessments (CAR)).

GHG-CCI retrieval experts are also members of the OCO-2 Science Team and involved in the development of retrieval algorithms for Sentinel-5-Precursor and the data products of these sensors will also be considered by GHG-CCI. For OCO-2 it is initially planned to perform detailed comparisons to determine the consistency of the XCO₂ data products and to perform initial retrievals.

GHG-CCI team members are also involved in the specification of future GHG satellites, in particular CarbonSat (Bovensmann et al., 2010, Buchwitz et al., 2013). CarbonSat, if selected for ESA's Earth Explorer 8 satellite, will continue the time series of greenhouse gas observations from space presented in this manuscript but will also address many important new aspects which cannot (or only with severe limitations) be addressed with other existing or planned satellites in particular the detection of localized CO₂ and CH₄ sources and the quantification of their emissions. Like SCIAMACHY,

GOSAT and OCO-2, sun induced chlorophyll fluorescence, SIF, will be a secondary data product from CarbonSat (Buchwitz et al., 2013) which can be linked to Gross Primary Production (GPP; e.g., Parazoo et al., 2013, and references given therein) and for investigating the impact of stress on vegetation and the CO₂ uptake at the few km² spatial resolution scale of CarbonSat. The main goal of CarbonSat is to advance our knowledge on the natural and man-made sources and sinks of the two most important anthropogenic greenhouse gases carbon dioxide and methane from the global via the sub-continental to the local scale. CarbonSat will be the first satellite mission to image small scale emission hot spots of CO₂ (e.g., cities, volcanoes, industrial areas) and CH₄ (e.g., fossil fuel production, landfills, seeps) and to quantify their emissions and discriminate them from surrounding biospheric fluxes. In this context see also Ciais et al., 2014, and CEOS, 2014, for an overview about current capabilities and limitations and future needs for establishing a global carbon observing system.

ACKNOWLEDGEMENTS

We thank JAXA and NIES for support and for providing us with GOSAT Level 1 data. We thank NIES and the NASA/ACOS team for supporting us and for providing us with GOSAT Level 2 data products. We thank ESA and DLR for providing us with SCIAMACHY Level 1 data products and ESA for funding this project.

REFERENCES

Note: (*) indicates publications with acknowledged GHG-CCI funding

- Alexe, M., Bergamaschi, P., Segers, A., et al., Inverse modeling of CH₄ emissions for 2010–2011 using different satellite retrieval products from GOSAT and SCIAMACHY, *Atmos. Chem. Phys.*, 15, 113–133, www.atmos-chem-phys.net/15/113/2015/, doi:10.5194/acp-15-113-2015, 2015. (*)
- Basu, S., Guerlet, S., Butz, A., et al., Global CO₂ fluxes estimated from GOSAT retrievals of total column CO₂, *Atmos. Chem. Phys.*, 13, 8695–8717, 2013. (*)
- Basu, S., Krol, M., Butz, A., et al., The seasonal variation of the CO₂ flux over Tropical Asia estimated from GOSAT, CONTRAIL and IASI, *Geophys. Res. Lett.*, doi: 10.1002/2013GL059105, 2014. (*)
- Bergamaschi, P., Frankenberg, C., Meirink, J. F., et al., Inverse modeling of global and regional CH₄ emissions using SCIAMACHY satellite retrievals, *J. Geophys. Res.*, 114, D22301, doi:10.1029/2009JD012287, 2009.
- Bergamaschi, P., Houweling, H., Segers, A., et al., Atmospheric CH₄ in the first decade of the 21st century: Inverse modeling analysis using SCIAMACHY satellite retrievals and NOAA surface measurements, *J. Geophys. Res.*, 118, 7350–7369, doi:10.1002/jrgd.50480, 2013.
- Bovensmann, H., Burrows, J. P., Buchwitz, M., et al., SCIAMACHY - Mission objectives and measurement modes, *J. Atmos. Sci.*, 56 (2), 127–150, 1999.
- Bovensmann, H., Buchwitz, M., Burrows, J. P., et al., A remote sensing technique for global monitoring of power plant CO₂ emissions from space and related applications, *Atmos. Meas. Tech.*, 3, 781–811, doi:10.5194/amt-3-781-2010, 2010.
- Buchwitz, M., Chevallier, F., Bergamaschi, P., et al., User Requirements Document for the GHG-CCI project of ESA's Climate Change Initiative, version 1 (URDv1), 3. February 2011, http://www.esa-ghg-cci.org/?q=webfm_send/21, 2011. (*)
- Buchwitz, M., Reuter, M., Bovensmann, H., et al., Carbon Monitoring Satellite (CarbonSat): assessment of atmospheric CO₂ and CH₄ retrieval errors by error parameterization, *Atmos. Meas. Tech.*, 6, 3477–3500, 2013.
- Buchwitz, M., Detmers, R., Boesch, H., et al., Product Specification Document for the GHG-CCI project of ESA's Climate Change Initiative, version 3 (PSDv3), 6. June 2014, http://www.esa-ghg-cci.org/index.php?q=webfm_send/160, 2014. (*)
- Buchwitz, M., Reuter, M., Schneising, O., et al., The Greenhouse Gas Climate Change Initiative (GHG-CCI): comparison and quality assessment of near-surface-sensitive satellite-derived CO₂ and CH₄ global data sets, *Remote Sensing of Environment*, 162, 344–362, doi:10.1016/j.rse.2013.04.024, 2015a. (*)
- Buchwitz, M., Dils, B., Boesch, H., et al., Product Validation and Intercomparison Report (PVIR) for the GHG-CCI project of ESA's Climate Change Initiative, version 3.2 (PVIRv3.2), 2. April 2015, http://www.esa-ghg-cci.org/?q=webfm_send/251, 2015b. (*)
- Buchwitz, M., Reuter, M., Schneising, O., et al., THE GREENHOUSE GAS PROJECT OF ESA'S CLIMATE CHANGE INITIATIVE (GHG-CCI): OVERVIEW, ACHIEVEMENTS AND FUTURE PLANS, The International Archives of the Photogrammetry, Remote Sensing and Spatial Information Sciences, Volume XL-7/W3, 2015 36th International Symposium on Remote Sensing of Environment, 11–15 May 2015, Berlin, Germany, http://www.esa-ghg-cci.org/?q=webfm_send/262, 2015c. (*)
- Burrows, J. P., Hölzle, E., Goede, A. P. H., Visser, H., and Fricke, W., SCIAMACHY—Scanning Imaging Absorption Spectrometer for Atmospheric Chartography, *Acta Astronaut.*, 35(7), 445–451, doi:10.1016/0094-5765(94)00278-t, 1995.
- Butz, A., Hasekamp, O. P., Frankenberg, C., Vidot, J., and Aben, I., CH₄ retrievals from space-based solar backscatter measurements: Performance evaluation against simulated aerosol and cirrus loaded scenes, *J. Geophys. Res.*, Volume 115, Issue D24, 27, DOI: 10.1029/2010JD014514, 2010.
- Butz, A., Guerlet, S., Hasekamp, O., et al., Toward accurate CO₂ and CH₄ observations from GOSAT, *Geophys. Res. Lett.*, doi:10.1029/2011GL047888, 2011. (*)
- Canadell, J. G., Ciais, P., Dhakal, S., et al., Interactions of the carbon cycle, human activity, and the climate system: a research portfolio, *Curr. Opin. Environ. Sustainabil.*, 2, 301–311, 2010.
- CEOS, CEOS Strategy for Carbon Observations from Space. The Committee on Earth Observation Satellites (CEOS) Response to the Group on Earth Observations (GEO) Carbon Strategy., April 2014 (issued date: September 30, 2014), 2014.
- Chevallier, F., Bergamaschi, P., Kaminski, T., Scholze, M., Climate Assessment Report (CAR) for the GHG-CCI project of ESA's Climate Change Initiative, version 1.1 (CARv1.1), 18. Nov. 2013, http://www.esa-ghg-cci.org/index.php?q=webfm_send/153, 2013. (*)
- Chevallier, F., and O'Dell, C. W., Error statistics of Bayesian CO₂ flux inversion schemes as seen from GOSAT, *Geophys. Res. Lett.*, doi: 10.1002/grl.50228, 2013. (*)
- Chevallier, F., Palmer, P.I., Feng, L., Boesch, H., O'Dell, C.W., Bousquet, P., Towards robust and consistent regional CO₂ flux estimates from in situ and space-borne measurements of atmospheric CO₂, *Geophys. Res. Lett.*, 41, 1065–1070, DOI: 10.1002/2013GL058772, 2014a. (*)
- Chevallier, F., Buchwitz, M., Bergamaschi, et al., User Requirements Document for the GHG-CCI project of ESA's Climate Change Initiative, version 2 (URDv2), 28. August 2014, http://www.esa-ghg-cci.org/?q=webfm_send/173, 2014b. (*)
- Chevallier, F., Bergamaschi, P., Brunner, D., et al., Climate Assessment Report (CAR) for the GHG-CCI project of ESA's Climate Change Initiative, pp. 87, version 2, 22 April 2015, http://www.esa-ghg-cci.org/?q=webfm_send/256, 2015. (*)
- Ciais, P., Dolman, A. J., Dargaville, R., Barrie, L., Butler, J., Canadell, J., & Moriyama, T., GEO Carbon Strategy. Rome: GEO Secretariat, Geneva / FAO, 2010.
- Ciais, P., Dolman, A. J., Bombelli, A., et al., Current systematic carbon cycle observations and needs for implementing a policy-relevant carbon observing system, *Biogeosciences*, 11, 3547–3602, www.biogeosciences.net/11/3547/2014/, doi:10.5194/bg-11-3547-2014, 2014.
- Cogan, A. J., Boesch, H., Parker, R. J., et al., Atmospheric carbon dioxide retrieved from the Greenhouse gases Observing SATellite (GOSAT): Comparison with ground-based TCCON observations and GEOS-Chem model calculations, *J. Geophys. Res.*, 117, D21301, doi:10.1029/2012JD018087, 2012.
- Cressot, C., F. Chevallier, P. Bousquet, et al., On the consistency between global and regional methane emissions inferred from SCIAMACHY, TANSO-FTS, IASI and surface measurements, *Atmos. Chem. Phys.*, 14, 577–592, 2014.
- Crevoisier C., Heilliette S., Chédin A., et al., Midtropospheric CO₂ concentration retrieval from AIRS

- observations in the tropics, *Geophys. Res. Lett.*, 31, L17106, 2004.
29. Crevoisier, C., Chédin, A., Matsueda, H., et al., First year of upper tropospheric integrated content of CO₂ from IASI hyperspectral infrared observations, *Atmos. Chem. Phys.*, 9, 4797-4810, 2009.
 30. Crevoisier, C., Nobileau, D., Armante, R., et al., The 2007–2011 evolution of tropical methane in the mid-troposphere as seen from space by MetOp-A/IASI, *Atmos. Chem. Phys.*, 13, 4279-4289, 2013. (*)
 31. Dils, B., Buchwitz, M., Reuter, M., et al., The Greenhouse Gas Climate Change Initiative (GHG-CCI): comparative validation of GHG-CCI SCIAMACHY/ENVISAT and TANSO-FTS/GOSAT CO₂ and CH₄ retrieval algorithm products with measurements from the TCCON, *Atmos. Meas. Tech.*, 7, 1723-1744, 2014. (*)
 32. Dlugokencky, E. J., Bruhwiler, L., White, J. W. C., et al., Observational constraints on recent increases in the atmospheric CH₄ burden, *Geophys. Res. Lett.*, 36, L18803, doi:10.1029/2009GL039780, 2009.
 33. Feng, L., Palmer, P. I., R. Parker, R. J., et al., Elevated uptake of CO₂ over Europe inferred from GOSAT XCO₂ retrievals: a real phenomenon or an artefact of the analysis?, *Atmos. Chem. Phys. Discuss.*, 15, 1989-2011, 2015. (*)
 34. Foucher, P. Y., Chédin, A., Dufour, G., et al., Technical Note: Feasibility of CO₂ profile retrieval from limb viewing solar occultation made by the ACE-FTS instrument, *Atmos. Chem. Phys.*, 9, 2873–2890, 2009.
 35. Frankenberg, C., Aben, I., Bergamaschi, P., et al., Global column-averaged methane mixing ratios from 2003 to 2009 as derived from SCIAMACHY: Trends and variability, *J. Geophys. Res.*, doi:10.1029/2010JD014849, 2011.
 36. Fraser, A., Palmer, P. I., Feng, L., et al., Estimating regional methane surface fluxes: the relative importance of surface and GOSAT mole fraction measurements, *Atmos. Chem. Phys.*, 13, 5697-5713, doi:10.5194/acp-13-5697-2013, 2013. (*)
 37. Fraser, A., Palmer, P. I., Feng, L., et al., Estimating regional fluxes of CO₂ and CH₄ using space-borne observations of XCH₄:XCO₂, *Atmos. Chem. Phys.*, 14, 12883-12895, www.atmos-chem-phys.net/14/12883/2014/, doi:10.5194/acp-14-12883-2014, 2014. (*)
 38. GCOS (Global Climate Observing System): SYSTEMATIC OBSERVATION REQUIREMENTS FOR SATELLITE-BASED DATA PRODUCTS FOR CLIMATE - 2011 Update - Supplemental details to the satellite-based component of the "Implementation Plan for the Global Observing System for Climate in Support of the UNFCCC (2010 Update)", GCOS-154, 2011.
 39. Guerlet, S., Basu, S., Butz, A., et al., Reduced carbon uptake during the 2010 Northern Hemisphere summer from GOSAT, *Geophys. Res. Lett.*, doi: 10.1002/grl.50402, 2013b. (*)
 40. Guerlet, S., Butz, A., Schepers, D., et al., Impact of aerosol and thin cirrus on retrieving and validating XCO₂ from GOSAT shortwave infrared measurements, *J. Geophys. Res.*, doi: 10.1002/jgrd.50332, 2013a. (*)
 41. Hayman, G. D., O'Connor, F. M., Dalvi, M., et al., Comparison of the HadGEM2 climate-chemistry model against in-situ and SCIAMACHY atmospheric methane data, *Atmos. Chem. Phys.*, 14, 13257-13280, doi:10.5194/acp-14-13257-2014, 2014. (*)
 42. Heymann, J., Schneising, O., Reuter, M., et al., SCIAMACHY WFM-DOAS XCO₂: comparison with CarbonTracker XCO₂ focusing on aerosols and thin clouds, *Atmos. Meas. Tech.*, 5, 1935-1952, 2012a. (*)
 43. Heymann, J., Bovensmann, H., Buchwitz, M., et al., SCIAMACHY WFM-DOAS XCO₂: reduction of scattering related errors, *Atmos. Meas. Tech.*, 5, 2375-2390, 2012b. (*)
 44. Heymann, J., Reuter, M., Hilker, M., et al., Consistent satellite XCO₂ retrievals from SCIAMACHY and GOSAT using the BESD algorithm, *Atmos. Meas. Tech. Discuss.*, 8, 1787-1832, 2015. (*)
 45. Hollmann, R., Merchant, C. J., Saunders, R., et al., The ESA Climate Change Initiative: satellite data records for essential climate variables, *Bulletin of the American Meteorological Society (BAMS)*, 0.1175/BAMS-D-11-00254.1, 2013. (*)
 46. IPCC, Climate Change 2013: The Physical Science Basis, Working Group I Contribution to the Fifth Assessment Report of the Intergovernmental Report on Climate Change, <http://www.ipcc.ch/report/ar5/wg1/>, 2013.
 47. Kirschke, S., Bousquet, P., Ciais, P., et al., Three decades of global methane sources and sinks, *Nat. Geosci.*, 6, 813–823, doi:10.1038/ngeo1955, 2013.
 48. Kort, E. A., Frankenberg, C., Costigan, K. R., et al., Four corners: The largest US methane anomaly viewed from space, *Geophys. Res. Lett.*, 41, doi:10.1002/2014GL061503, 2014.
 49. Kuze, A., Suto, H., Nakajima, M., and Hamazaki, T., Thermal and near infrared sensor for carbon observation Fourier-transform spectrometer on the Greenhouse Gases Observing Satellite for greenhouse gases monitoring, *Appl. Opt.*, 48, 6716–6733, 2009.
 50. Laeng, A., Plieninger, J., von Clarmann, T., et al., Validation of MIPAS IMK/IAA methane version V5R_CH4_222 profiles, in preparation for AMT, 2014. (*)
 51. Le Quéré, G., Peters, G. P., Andres, R. J., et al., Global carbon budget 2013, *Earth Syst. Sci. Data*, 6, 235–263, doi:10.5194/essd-6-235-2014, www.earth-syst-sci-data.net/6/235/2014/, 2014.
 52. Monteil, G., Houweling, S., Butz, A., et al., Comparison of CH₄ inversions based on 15 months of GOSAT and SCIAMACHY observations, *J. Geophys. Res.*, doi: 10.1002/2013JD019760, Vol 118, Issue 20, 11807-11823, 2013. (*)
 53. Noël, S., Bramstedt, K., Rozanov, A., et al., Stratospheric methane profiles from SCIAMACHY solar occultation measurements derived with onion peeling DOAS, *Atmos. Meas. Tech.*, 4, 2567-2577, 2011. (*)
 54. Notholt, J., Dils, B., Buchwitz, M., et al., Product Validation and Intercomparison Report (PVIR) for the GHG-CCI project of ESA's Climate Change Initiative, version 2 (PVIRv2), 4. Nov. 2013, http://www.esa-ghg-cci.org/index.php?q=webfm_send/152, 2013. (*)
 55. O'Dell, C. W., Connor, B., Boesch, H., et al., The ACOS CO₂ retrieval algorithm – Part 1: Description and validation against synthetic observations, *Atmos. Meas. Tech.*, 5, 99–121, 2012.
 56. Olivier, J. G. J., Janssens-Maenhout, G., and Peters, J. A. H. W., Trends in global CO₂ emissions, 2012 Report, PBL Netherlands Environmental Assessment Agency, The Hague, Joint Research Centre, Ispra, ISBN 978-92-79-25381-2, 2012.
 57. Oshchepkov, S., Bril, A., Maksyutov, S., and Yokota, T., Detection of optical path in spectroscopic space-based observations of greenhouse gases: Application to GOSAT data processing, *J. Geophys. Res.*, 116, D14304, doi:10.1029/2010JD015352, 2011.
 58. Oshchepkov, S., Bril, A., Yokota, T., et al., Effects of atmospheric light scattering on spectroscopic observations of greenhouse gases from space. Part 2: Algorithm intercomparison in the GOSAT data processing for CO₂

- retrievals over TCCON sites, *J. Geophys. Res.*, 118, 1493–1512, doi:10.1002/jgrd.50146, 2013. (*)
59. Parazoo, N. C., Bowman, K., Frankenberg, C., et al., Interpreting seasonal changes in the carbon balance of southern Amazonia using measurements of XCO₂ and chlorophyll fluorescence from GOSAT, *Geophys. Res. Lett.*, 40, 2829–2833, doi:10.1002/grl.50452, 2013. (*)
 60. Parker, R., Boesch, H., Cogan, A., et al., Methane Observations from the Greenhouse gases Observing SATellite: Comparison to ground-based TCCON data and Model Calculations, *Geophys. Res. Lett.*, doi:10.1029/2011GL047871, 2011.
 61. Peters, W., Jacobson, A. R., Sweeney, C., et al.: An atmospheric perspective on North American carbon dioxide exchange: CarbonTracker, *Proceedings of the National Academy of Sciences (PNAS) of the United States of America*, 27 Nov. 2007, 104(48), 18925-18930, 2007.
 62. Peylin, P., Law, R. M., Gurney, et al., Global atmospheric carbon budget: results from an ensemble of atmospheric CO₂ inversions, *Biogeosciences*, 10, 6699–6720, doi:10.5194/bg-10-6699-2013, URL <http://www.biogeosciences.net/10/6699/2013/>, 2013.
 63. Reuter, M., Buchwitz, M., Schneising, O., et al., A method for improved SCIAMACHY CO₂ retrieval in the presence of optically thin clouds, *Atmos. Meas. Tech.*, 3, 209-232, 2010.
 64. Reuter, M., Bovensmann, H., Buchwitz, M., et al., Retrieval of atmospheric CO₂ with enhanced accuracy and precision from SCIAMACHY: Validation with FTS measurements and comparison with model results, *J. Geophys. Res.*, 116, D04301, doi:10.1029/2010JD015047, 2011. (*)
 65. Reuter, M., Bovensmann, H., Buchwitz, M., et al., On the potential of the 2041–2047 nm spectral region for remote sensing of atmospheric CO₂ isotopologues, *Journal of Quantitative Spectroscopy and Radiative Transfer*, 113(16), 2009–2017, doi:10.1016/j.jqsrt.2012.07.013, 2012a. (*)
 66. Reuter, M., Buchwitz, M., Schneising, O., et al., A simple empirical model estimating atmospheric CO₂ background concentrations, *Atmos. Meas. Tech.*, 5, 1349-1357, 2012b. (*)
 67. Reuter, M., Boesch, H., Bovensmann, H., et al., A joint effort to deliver satellite retrieved atmospheric CO₂ concentrations for surface flux inversions: the ensemble median algorithm EMMA, *Atmos. Chem. Phys.*, 13, 1771-1780, 2013. (*)
 68. Reuter, M., Buchwitz, M., Hilker, M., et al., Satellite-inferred European carbon sink larger than expected, *Atmos. Chem. Phys.*, 14, 13739-13753, www.atmos-chem-phys.net/14/13739/2014/, doi:10.5194/acp-14-13739-2014, 2014a. (see also http://www.esa.int/Our_Activities/Observing_the_Earth/Is_Europe_an_underestimated_sink_for_carbon_dioxide/) (*)
 69. Reuter, M., Buchwitz, M., Hilboll, A., et al., Decreasing emissions of NO_x relative to CO₂ in East Asia inferred from satellite observations, *Nature Geoscience*, 28 Sept. 2014, doi:10.1038/ngeo2257, pp.4, 2014b. (see also http://www.esa.int/Our_Activities/Observing_the_Earth/Space_for_our_climate/Good_and_bad_news_for_our_atmosphere/) (*)
 70. Rigby, M., Prinn, R. G., Fraser, P. J., et al., Renewed growth of atmospheric methane, *Geophys. Res. Lett.*, 35, L22805, doi:10.1029/2008GL036037, 2008.
 71. Ross, A. N., Wooster, M. J., Boesch, H., Parker, R., First satellite measurements of carbon dioxide and methane emission ratios in wildfire plumes, *Geophys. Res. Lett.*, 40, 1-5, doi:10.1002/grl.50733, 2013. (*)
 72. Schepers, D., Guerlet, S., Butz, A., et al., Methane retrievals from Greenhouse Gases Observing Satellite (GOSAT) shortwave infrared measurements: Performance comparison of proxy and physics retrieval algorithms, *J. Geophys. Res.*, 117, D10307, doi:10.1029/2012JD017549, 2012.
 73. Schneising, O., Buchwitz, M., Reuter, M., et al., Long-term analysis of carbon dioxide and methane column-averaged mole fractions retrieved from SCIAMACHY, *Atmos. Chem. Phys.*, 11, 2881-2892, 2011. (*)
 74. Schneising, O., Bergamaschi, P., Bovensmann, H., et al., Atmospheric greenhouse gases retrieved from SCIAMACHY: comparison to ground-based FTS measurements and model results, *Atmos. Chem. Phys.*, 12, 1527-1540, 2012. (*)
 75. Schneising, O., Heymann, J., Buchwitz, M., Reuter, M., Bovensmann, H., and Burrows, J. P., Anthropogenic carbon dioxide source areas observed from space: assessment of regional enhancements and trends, *Atmos. Chem. Phys.*, 13, 2445-2454, 2013. (*)
 76. Schneising, O., Reuter, M., Buchwitz, M., Heymann, J., Bovensmann, H., and Burrows, J. P., Terrestrial carbon sink observed from space: variation of growth rates and seasonal cycle amplitudes in response to interannual surface temperature variability, *Atmos. Chem. Phys.*, 14, 133-141, 2014a. (*)
 77. Schneising, O., Burrows, J. P., Dickerson, R. R., Buchwitz, M., Reuter, M., Bovensmann, H., Remote sensing of fugitive methane emissions from oil and gas production in North American tight geologic formations, *Earth's Future*, 2, DOI: 10.1002/2014EF000265, pp. 11, 2014b. (*)
 78. Schulze, E. D., Luyssaert, S., Ciais, P, et al., Importance of methane and nitrous oxide emissions for Europe's terrestrial greenhouse gas balance, *Nat. Geosci.*, 2, 842–850, doi:10.1038/ngeo686, 2009.
 79. Shindell, D. T., Pechony, O., Voulgarakis, A., et al., Interactive ozone and methane chemistry in GISS-E2 historical and future climate simulations, *Atmos. Chem. Phys.*, 13, 2653–2689, doi:10.5194/acp-13-2653-2013, 2013.
 80. Sussmann, R., Forster, F., Rettinger, M, and Jones, N., Strategy for high-accuracy-and-precision retrieval of atmospheric methane from the mid-infrared FTIR network, *Atmos. Meas. Tech.*, 4, 1943-1964, 2011. (*)
 81. Sussmann, R., Forster, F., Rettinger, M., and Bousquet, P., Renewed methane increase for five years (2007-2011) observed by solar FTIR spectrometry, *Atmos. Chem. Phys.*, 12, 4885-4891, 2012. (*)
 82. Sussmann, R., Ostler, A., Forster, F., et al., First intercalibration of column-averaged methane from the Total Carbon Column Observing Network and the Network for the Detection of Atmospheric Composition Change, *Atmos. Meas. Tech.*, 6, 397-418, 2013. (*)
 83. Wecht, K. J, Jacob, D. J., Sulprizio, M. P., et al., Spatially resolving methane emissions in California: constraints from the CalNex aircraft campaign and from present (GOSAT, TES) and future (TROPOMI, geostationary) satellite observations, *Atmos. Chem. Phys.*, 14, 8173-8184, www.atmos-chem-phys.net/14/8173/2014/, doi:10.5194/acp-14-8173-2014, 2014. (*)
 84. Wunch, D., Toon, G. C., Blavier, J.-F., et al., The Total Carbon Column Observing Network, *Phil. Trans. R. Soc. A*, 369, 2087–2112, doi:10.1098/rsta.2010.0240, 2011.
 85. Yoshida, Y., Kikuchi, N., Morino, I., et al., Improvement of the retrieval algorithm for GOSAT SWIR XCO₂ and XCH₄ and their validation using TCCON data, *Atmos. Meas. Tech.*, 6, 1533–1547, doi:10.5194/amt-6-1533-2013, 2013.