



Copernicus Climate Change Service



Product User Guide and Specification (PUGS) – ANNEX D for products XCO2_EMMA, XCH4_EMMA, XCO2_OBS4MIPS, XCH4_OBS4MIPS (v4.1, 2003-2018)

C3S_312b_Lot2_DLR – Atmosphere

Issued by: Maximilian Reuter, University of Bremen,

Institute of Environmental Physics (IUP)

Date: 03/11/2019

Ref: C3S_D312b_Lot2.3.2.3-v1.0_PUGS-GHG_ANNEX-D_v3.1

Official reference number service contract: 2018/C3S_312b_Lot2_DLR/SC1



This document has been produced in the context of the Copernicus Climate Change Service (C3S).

The activities leading to these results have been contracted by the European Centre for Medium-Range Weather Forecasts, operator of C3S on behalf of the European Union (Delegation Agreement signed on 11/11/2014). All information in this document is provided "as is" and no guarantee or warranty is given that the information is fit for any particular purpose.

The user thereof uses the information at its sole risk and liability. For the avoidance of all doubts, the European Commission and the European Centre for Medium-Range Weather Forecasts has no liability in respect of this document, which is merely representing the authors view.



Contributors

**INSTITUTE OF ENVIRONMENTAL PHYSICS (IUP),
UNIVERSITY OF BREMEN, BREMEN, GERMANY
(IUP)**

M. Reuter

M. Buchwitz

O. Schneising-Weigel



Table of Contents

History of modifications	5
Related documents	6
Acronyms	7
General definitions	11
Scope of document	12
Executive summary	13
1. Product description	14
1.1 EMMA products	14
1.2 OBS4MIPS products	16
2. Target requirements	18
3. Data usage information	19
3.1 EMMA products	19
3.2 OBS4MIPS products	20



History of modifications

Version	Date	Description of modification	Chapters / Sections
1.3	20-October-2017	New document for data set CDR1 (2003-2016)	All
2.0	4-October-2018	Update for CDR2 (2003-2017)	All
3.0	12-August-2019	Update for CDR3 (2003-2018)	All
3.1	03-November-2019	Update after review by Assimila: Correction of typos. Figure captions moved to above figures.	All



Related documents

Reference ID	Document
D1	<p>Main PUGS:</p> <p>Buchwitz, M., et al., Product User Guide and Specification (PUGS) – Main document for Greenhouse Gas (GHG: CO₂ & CH₄) data set CDR 3 (2003-2018), project C3S_312b_Lot2_DLR – Atmosphere, v3.1, 2019.</p> <p><i>(this document is an ANNEX to the Main PUGS)</i></p>
D2	<p>Corresponding ATBD:</p> <p>ATBD ANNEX D: Reuter, M., et al., Algorithm Theoretical Basis Document (ATBD) – ANNEX D for products XCO₂_EMMA, XCH₄_EMMA, XCO₂_OBS4MIPS, XCH₄_OBS4MIPS (v4.1, 2003-2018), project C3S_312b_Lot2_DLR – Atmosphere, v3.1, 2019</p>
D3	<p>TRD GHG, 2017: Buchwitz, M., Aben, I., Anand, J., Armante, R., Boesch, H., Crevoisier, C., Detmers, R. G., Hasekamp, O. P., Reuter, M., Schneising-Weigel, O., Target Requirement Document, Copernicus Climate Change Service (C3S) project on satellite-derived Essential Climate Variable (ECV) Greenhouse Gases (CO₂ and CH₄) data products (project C3S_312a_Lot6), Version 1.3, 20-October-2017, pp. 53, 2017.</p>



Acronyms

Acronym	Definition
AIRS	Atmospheric Infrared Sounder
AMSU	Advanced Microwave Sounding Unit
ATBD	Algorithm Theoretical Basis Document
BESD	Bremen optimal ESTimation DOAS
CAR	Climate Assessment Report
C3S	Copernicus Climate Change Service
CCDAS	Carbon Cycle Data Assimilation System
CCI	Climate Change Initiative
CDR	Climate Data Record
CDS	(Copernicus) Climate Data Store
CMUG	Climate Modelling User Group (of ESA's CCI)
CRG	Climate Research Group
D/B	Data base
DOAS	Differential Optical Absorption Spectroscopy
EC	European Commission
ECMWF	European Centre for Medium Range Weather Forecasting
ECV	Essential Climate Variable
EMMA	Ensemble Median Algorithm
ENVISAT	Environmental Satellite (of ESA)
EO	Earth Observation
ESA	European Space Agency
EU	European Union
EUMETSAT	European Organisation for the Exploitation of Meteorological Satellites
FCDR	Fundamental Climate Data Record



FoM	Figure of Merit
FP	Full Physics retrieval method
FTIR	Fourier Transform InfraRed
FTS	Fourier Transform Spectrometer
GCOS	Global Climate Observing System
GEO	Group on Earth Observation
GEOSS	Global Earth Observation System of Systems
GHG	GreenHouse Gas
GOME	Global Ozone Monitoring Experiment
GMES	Global Monitoring for Environment and Security
GOSAT	Greenhouse Gases Observing Satellite
IASI	Infrared Atmospheric Sounding Interferometer
IMAP-DOAS (or IMAP)	Iterative Maximum A posteriori DOAS
IPCC	International Panel in Climate Change
IUP	Institute of Environmental Physics (IUP) of the University of Bremen, Germany
JAXA	Japan Aerospace Exploration Agency
JCGM	Joint Committee for Guides in Metrology
L1	Level 1
L2	Level 2
L3	Level 3
L4	Level 4
LMD	Laboratoire de Météorologie Dynamique
MACC	Monitoring Atmospheric Composition and Climate, EU GMES project
NA	Not applicable
NASA	National Aeronautics and Space Administration
NetCDF	Network Common Data Format
NDACC	Network for the Detection of Atmospheric Composition Change



NIES	National Institute for Environmental Studies
NIR	Near Infra Red
NLIS	LMD/CNRS <i>neuronal</i> network mid/upper tropospheric CO ₂ and CH ₄ retrieval algorithm
NOAA	National Oceanic and Atmospheric Administration
Obs4MIPs	Observations for Climate Model Intercomparisons
OCO	Orbiting Carbon Observatory
OE	Optimal Estimation
PBL	Planetary Boundary Layer
ppb	Parts per billion
ppm	Parts per million
PR	(light path) PROxy retrieval method
PVIR	Product Validation and Intercomparison Report
QA	Quality Assurance
QC	Quality Control
REQ	Requirement
RMS	Root-Mean-Square
RTM	Radiative transfer model
SCIAMACHY	SCanning Imaging Absorption spectroMeter for Atmospheric ChartographY
SCIATRAN	SCIAMACHY radiative transfer model
SRON	SRON Netherlands Institute for Space Research
SWIR	Short Wava Infra Red
TANSO	Thermal And Near infrared Sensor for carbon Observation
TANSO-FTS	Fourier Transform Spectrometer on GOSAT
TBC	To be confirmed
TBD	To be defined / to be determined
TCCON	Total Carbon Column Observing Network
TIR	Thermal Infra Red



TR	Target Requirements
TRD	Target Requirements Document
WFM-DOAS (or WFMD)	Weighting Function Modified DOAS
UoL	University of Leicester, United Kingdom
URD	User Requirements Document
WMO	World Meteorological Organization
Y2Y	Year-to-year (bias variability)



General definitions

Table 1 lists some general definitions relevant for this document.

Table 1: General definitions.

Item	Definition
XCO ₂	Column-averaged dry-air mixing ratios (mole fractions) of CO ₂
XCH ₄	Column-averaged dry-air mixing ratios (mole fractions) of CH ₄
L1	Level 1 satellite data product: geolocated radiance (spectra)
L2	Level 2 satellite-derived data product: Here: XCO ₂ and XCH ₄ information for each ground-pixel
L3	Level 3 satellite-derived data product: Here: Gridded XCO ₂ and XCH ₄ information, e.g., 5°x5°, monthly
L4	Level 4 satellite-derived data product: Here: Surface fluxes (emission and/or uptake) of CO ₂ and CH ₄



Scope of document

This document is a Product User Guide and Specification (PUGS) for the Copernicus Climate Change Service (C3S, <https://climate.copernicus.eu/>) greenhouse gas (GHG) component as covered by project C3S_312b_Lot2.

Within this project satellite-derived atmospheric carbon dioxide (CO₂) and methane (CH₄) Essential Climate Variable (ECV) data products are being generated and delivered to ECMWF for inclusion into the Copernicus Climate Data Store (CDS) from which users can access these data products and the corresponding documentation.

The satellite-derived GHG data products are:

- Column-averaged dry-air mixing ratios (mole fractions) of CO₂ and CH₄, denoted XCO₂ (in parts per million, ppm) and XCH₄ (in parts per billion, ppb), respectively.
- Mid/upper tropospheric mixing ratios of CO₂ (in ppm) and CH₄ (in ppb).

This document describes the C3S products XCO₂_EMMA, XCH₄_EMMA, XCO₂_OBS4MIPS, and XCH₄_OBS4MIPS.

These products are merged multi-sensor XCO₂ and XCH₄ Level 2 and Level 3 products generated using algorithms developed at University of Bremen, Germany (see D2).



Executive summary

The EMMA database consists of individual level 2 soundings retrieved by algorithms which can change from grid box to grid box and month to month. It can be used in the same manner as any other XCO₂ or XCH₄ satellite retrieval, i.e., the EMMA database includes all information needed for inverse modeling (geo-location, time, XCO₂ or XCH₄, averaging kernels, etc.).

The data fields and guidance on their use are provided in the main PUGS document (*D1*) describing, e.g., the common variables of all XCO₂ and XCH₄ L2 data sets provided by the Copernicus C3S_312b_Lot2 sub-project.

Additionally, to the common variables, EMMA includes information on, e.g., the inter-algorithm spread which informs about potential regional uncertainties and on the source-algorithm of each individual sounding within the EMMA data base. Such variables are subject to this ANNEX describing the EMMA v4.1 CO₂ and EMMA v4.1 CH₄ specific aspects of the EMMA L2 data base.

The L3 data products XCO₂_OBS4MIPS and XCH₄_OBS4MIPS are generated by spatial (5°x5°) and temporal (monthly) gridding of the corresponding EMMA L2 data bases. Additional information to what can be found in this document about the data format, content, and user guidelines can be obtained from the main PUGS document (*D1*).



1. Product description

1.1 EMMA products

Additionally to the common variables described in the main PUGS document (*D1*) the EMMA L2 data base includes the variables listed in **Table 2** and described in the following. **Table 3** lists all individual sensor / individual algorithm Level 2 products, which have been used as input for the generation of the EMMA XCO₂ and XCH₄ products.

Table 2: EMMA v4.1 CO₂ and EMMA v4.1 CH₄ specific variables.

Name	Type	Dimension	Units	Short Description
median_processor_id	Integer	n	[-]	A unique ID for each L2 algorithm contributing to EMMA
median_uncertainty	Float	n	For XCO ₂ : ppm, i.e., 10 ⁻⁶ For XCH ₄ : ppb, i.e., 10 ⁻⁹	Inter algorithm spread defined as standard deviation of the L3 products in the corresponding grid box (see <i>D2</i>)
median_uncertainty_se	Float	n	For XCO ₂ : ppm, i.e., 10 ⁻⁶ For XCH ₄ : ppb, i.e., 10 ⁻⁹	Standard error of the median uncertainty (see <i>D2</i>)
median_uncertainty_ex	Float	n	For XCO ₂ : ppm, i.e., 10 ⁻⁶ For XCH ₄ : ppb, i.e., 10 ⁻⁹	Inter-algorithm spread as expected from measurement noise (see <i>D2</i>)
<xco2 xch4>_accuracy	Float	n	For XCO ₂ : ppm, i.e., 10 ⁻⁶ For XCH ₄ : ppb, i.e., 10 ⁻⁹	Potential spatio/temporal XCO ₂ or XCH ₄ bias (1-sigma) estimated from TCCON co-locations (see <i>D2</i>)
contributing_algorithms	Byte	n	[-]	Number of L2 algorithms contributing to median calculation in a specific grid box

Description of each parameter:

median_processor_id

A unique ID for each L2 algorithm contributing to EMMA v4.1 CO₂ and CH₄. See listing in **Table 3**.

median_uncertainty

Inter algorithm spread defined as standard deviation of the L3 products in the corresponding grid box (see *D2*).

median_uncertainty_se

Standard error of the median uncertainty (see *D2*).

median_uncertainty_ex

Inter-algorithm spread as expected from measurement noise (see *D2*).



<xco2/xch4>_accuracy

Potential spatio/temporal XCO₂ or XCH₄ bias (1-sigma) estimated from TCCON co-locations (see D2).

contributing_algorithms

Number of L2 algorithms contributing to median calculation in a specific grid box.

Table 3: Unique L2 algorithm IDs used in EMMA v4.1 CO₂ and CH₄.

ID	Quantity	Name	Version	Institution
2	XCO ₂	BESD	v02.01.02	IUP
3	XCO ₂	ACOS	v7.3.10a	NASA
4	XCO ₂	RemoTeC	v2.3.8	SRON
6	XCO ₂	UoL-FP	v7.2	UoL
-6	XCO ₂	PPDF-S	v02.xx	NIES
5	XCO ₂	NIES	v02.75bc (bias corrected)	NIES
1000	XCO ₂	FOCAL	v08	IUP
10	XCO ₂	NASA	V9.0.03	NASA
30	XCH ₄	RemoTeC-PR	v2.3.9	SRON
31	XCH ₄	RemoTeC-FP	v2.3.8	SRON
40	XCH ₄	UoL-PR	v7.2	UoL
41	XCH ₄	UoL-FP	v7.2	UoL
50	XCH ₄	PPDF-S	v02.xx	NIES
60	XCH ₄	NIES	v02.75bc (bias corrected)	NIES
70	XCH ₄	WFMD	v4.0	IUP



1.2 OBS4MIPS products

Obs4MIPS (Observations for Model Intercomparisons Project) is an activity to make observational products more accessible especially for climate model intercomparisons.

The XCO₂_OBS4MIPS and XCH₄_OBS4MIPS data products are in Obs4MIPS NCDF format, which is described on the Obs4MIPS website: <https://www.earthsystemcog.org/projects/obs4mips/>.

The XCO₂_OBS4MIPS and XCH₄_OBS4MIPS products are generated by spatial (5°x5°) and temporal (monthly) gridding of the corresponding EMMA L2 products.

The OBS4MIPS L3 products include the variables listed in **Table 4** and described in the following.

Table 4: XCO₂_OBS4MIPS and XCH₄_OBS4MIPS variables. x, y, z, t, represent the number of grid points in longitude, latitude, pressure, and temporal direction.

Name	Type	Dimension	Units	Short Description
time	Float	t	Days since 1990-01-01	Time center
time_bnds	Float	t,2	Days since 1990-01-01	Time boundaries
lat	Float	y	Degrees north	Latitude center
lat_bnds	Float	y,2	Degrees north	Latitude boundaries
lon	Float	x	Degrees east	Longitude center
lon_bnds	Float	x,2	Degrees east	Longitude boundaries
pre	Float	z	Surface pressure	Pressure center
pre_bnds	Float	z,2	Surface pressure	Pressure boundaries
land_fraction	Float	x,y	1	Land area fraction
<xco2 xch4>	Float	x,y,t	1	Satellite retrieved column-average dry-air mole fraction of CO ₂ or CH ₄
<xco2 xch4>_nobs	Integer	x,y,t	1	Number of individual L2 observations
<xco2 xch4>_stddev	Float	x,y,t	1	Standard error
<xco2 xch4>_stddev	Float	x,y,t	1	Standard deviation
column averaging kernel	Float	x,y,z,t	1	Column-averaging kernel
vmr_profile_<co2 ch4>_apriori	Float	x,y,z,t	1	A priori dry-air mole fraction profile

**Description of each parameter:*****time, time_bnds***

Time center and boundaries in days since 1990-01-01.

lat, lat_bnds

Latitude center and boundaries in degrees north.

lon, lon_bnds

Longitude center and boundaries in degrees east.

pre, pre_bnds

Pressure center and boundaries in units of surface pressure.

land_fraction

Land area fraction computed from GTOPO30 data available from the U.S. Geological Survey.

<xco2/xch4>

Main parameter: satellite retrieved column-average dry-air mole fraction of CO₂ or CH₄.

<xco2/xch4>_nobs

Number of individual L2 observations per grid box.

<xco2/xch4>_stddev

Standard error of the average computed from the single sounding noise and potential seasonal and regional biases, i.e., the inter algorithm spread.

<xco2/xch4>_stddev

Standard deviation of the L2 observations within each grid box.

column averaging kernel

The normalized column-averaging kernel represents the sensitivity of the retrieved XCO₂ or XCH₄ to the true mole fraction depending on pressure (height). All values represent layer averages within the corresponding pressure levels. Values near one are ideal and indicate that the influence of the a priori is minimal. Profiles are ordered from surface to top of atmosphere.

vmr_profile_<co2/ch4>_apriori

A priori dry-air mole fraction profile of atmospheric CO₂ or CH₄. All values represent layer averages within the corresponding pressure levels. Profiles are ordered from surface to top of atmosphere. The a priori profile is needed to apply the column averaging kernel.



2. Target requirements

The target requirements for these products are described in the Target Requirement Document (TRD) (*TRD GHG, 2017*), see *D3*.

3. Data usage information

3.1 EMMA products

The EMMA database consists of individual level 2 soundings which can be used in the same manner as any other XCO₂ or XCH₄ satellite retrieval, i.e., the EMMA database includes all information needed for inverse modelling (geo-location, time, XCO₂ or XCH₄, averaging kernels, etc.). The main PUGS document (*D1*) provides guidance on how to use the information.

Figure 1 shows for an example month (April 2015) the EMMA XCO₂ and XCH₄ and the corresponding algorithm selected by the median (see *D2*). **Figure 2** shows the average inter-algorithm spread (01/2003 – 12/2018) and the expected average inter-algorithm spread due to measurement noise for XCO₂ and XCH₄.

Figure 1: EMMA L2 XCO₂ and XCH₄ (**left**) and corresponding selected algorithm (**right**) for EMMA v4.1 CO₂ (**top**) and EMMA v4.1 CH₄ (**bottom**) at the example of April 2015.

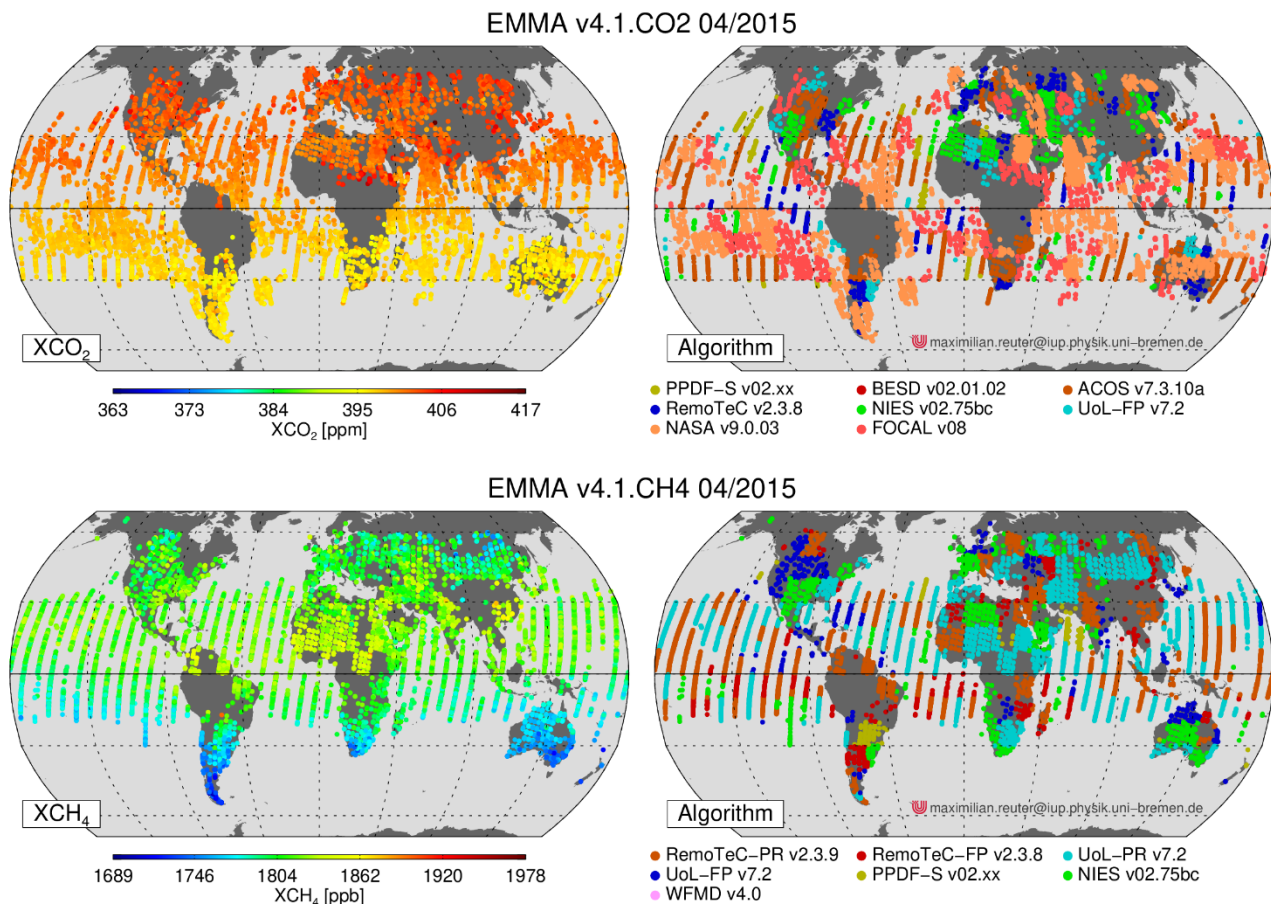
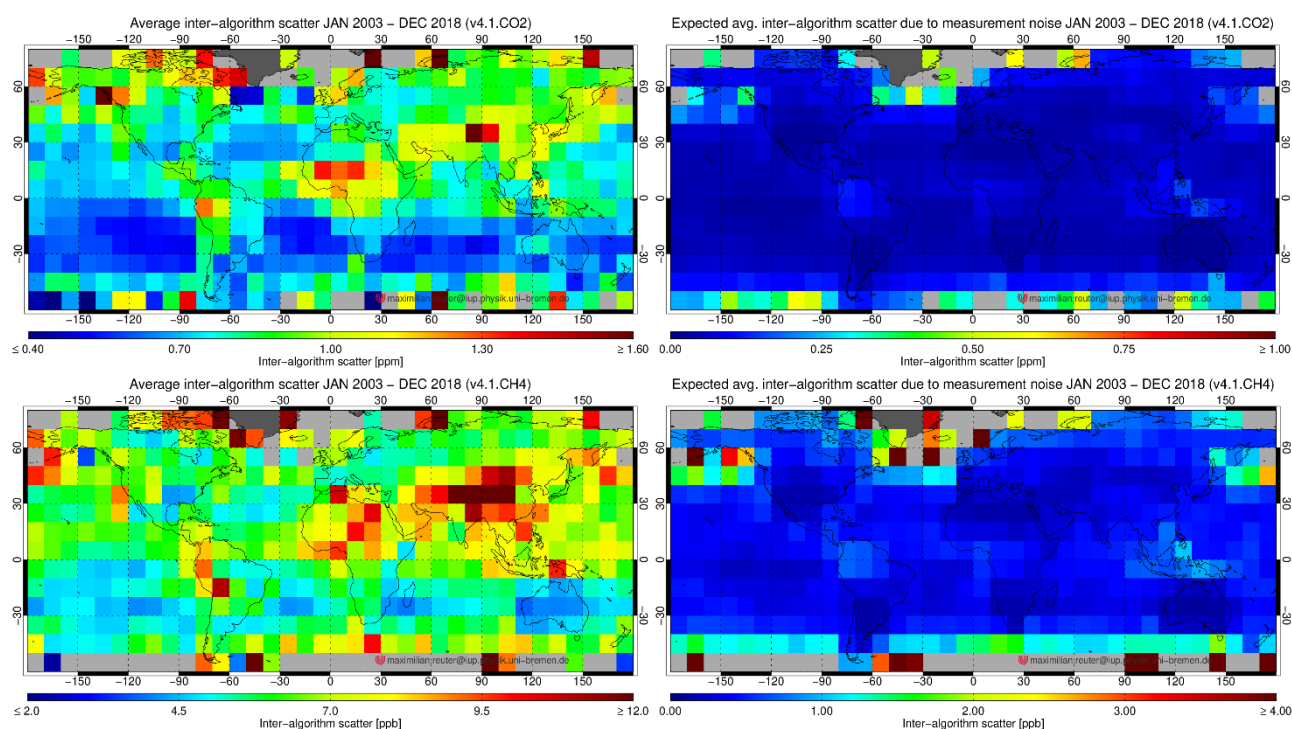




Figure 2: Average inter-algorithm spread (01/2003 – 12/2018) (**left**) and expected average inter-algorithm spread due to measurement noise (**right**) for EMMA v4.1 CO₂ (**top**) and EMMA v4.1 CH₄ (**bottom**).



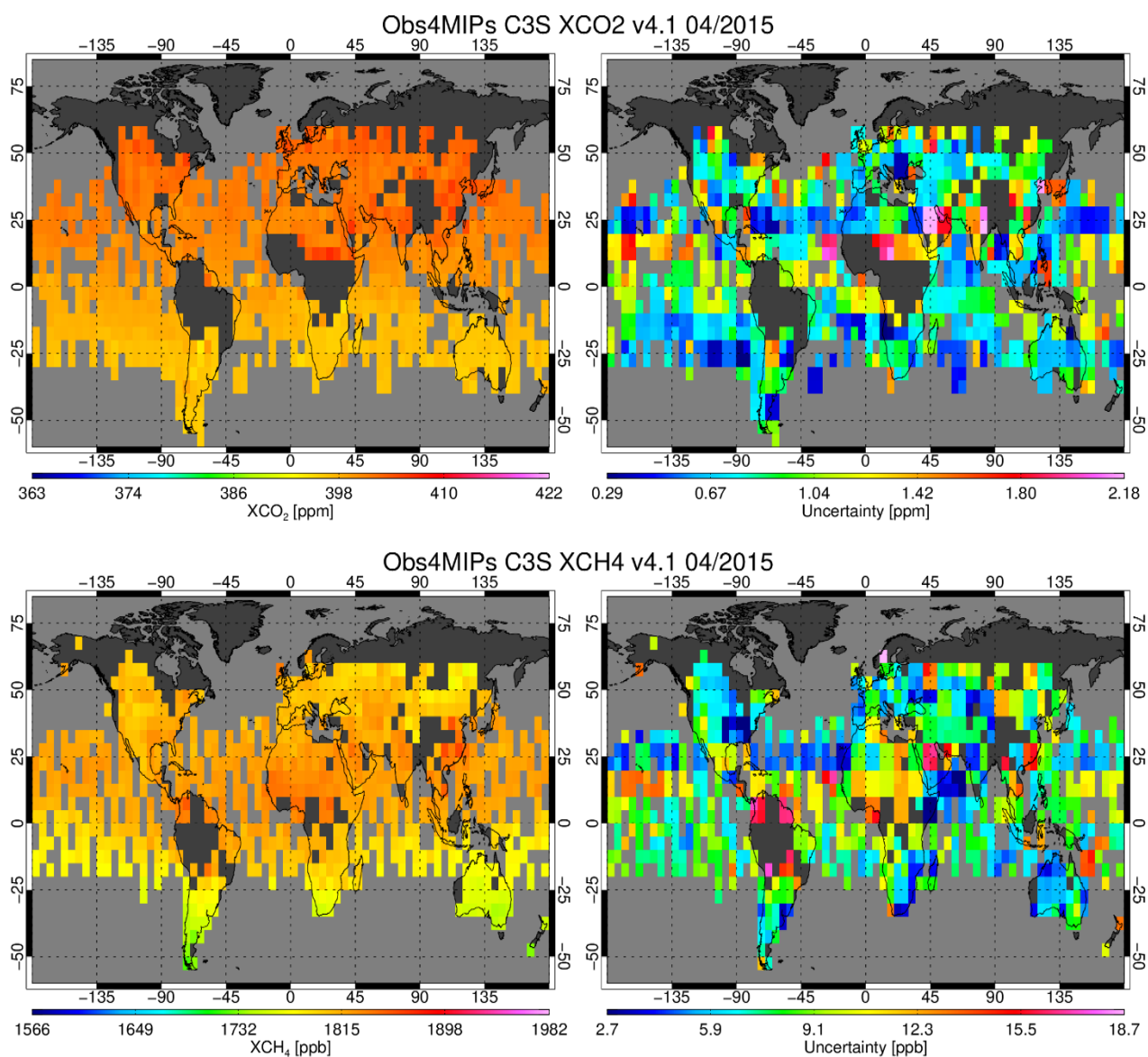
3.2 OBS4MIPS products

The XCO₂_OBS4MIPS and XCH₄_OBS4MIPS products consist of spatially (5°x5°) and temporal (monthly) gridded EMMA L2 data. Among other parameters, the data files include averaged XCO₂ or XCH₄ satellite retrievals and uncertainties, column averaging kernels, and a priori profiles. The main PUGS document (*D1*) provides guidance on how to use this information.

Figure 3 shows for an example month (April 2015) the OBS4MIPS XCO₂ and XCH₄ and the corresponding uncertainty computed from the retrieval noise and EMMA's inter-algorithm spread (see *D2*).



Figure 3: Top: XCO₂_OBS4MIPS XCO₂ for April 2015 (**left**) and its uncertainty computed from the retrieval noise and EMMA's inter-algorithm spread (**right**). **Bottom:** Same for XCH₄_OBS4MIPS.





ECMWF - Shinfield Park, Reading RG2 9AX, UK

Contact: info@copernicus-climate.eu